

CROSS-BORDER ARCHAEOLOGY



EU leaders convene in Esbjerg to harness the North Sea's green energy potential

To speed up the buildout of renewable energy in the North Sea, Denmark hosts Heads of States from Germany, Belgium, the Netherlands, and President of the EU Commission Ursula von der Leyen for the North Sea Summit on 18 May.





<https://www.bradford.ac.uk/archaeological-forensic-sciences/research/europes-lost-frontiers/>

DR R. RIIS-ANDRESEN
PROFESSOR





ne axe found on the shore at low tide. Photo: P.M. Astrup.

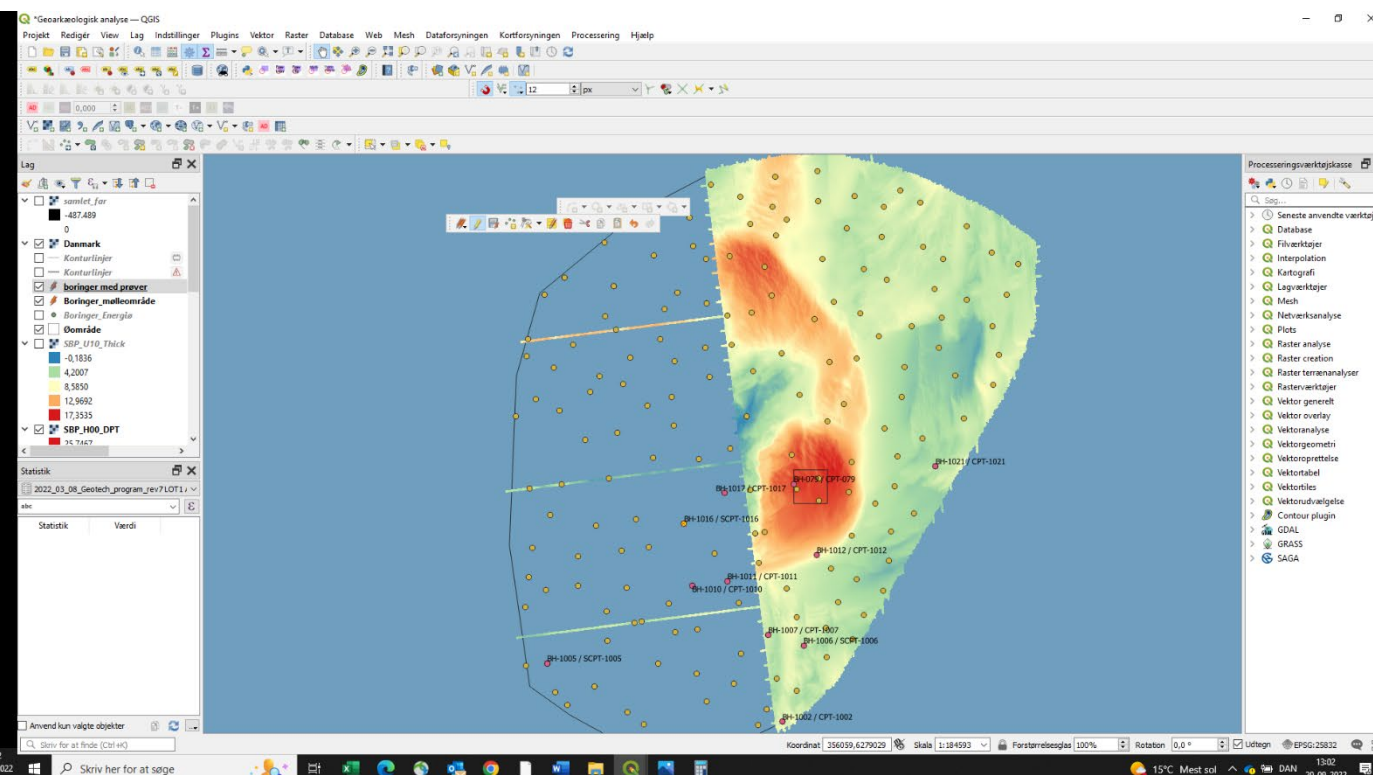
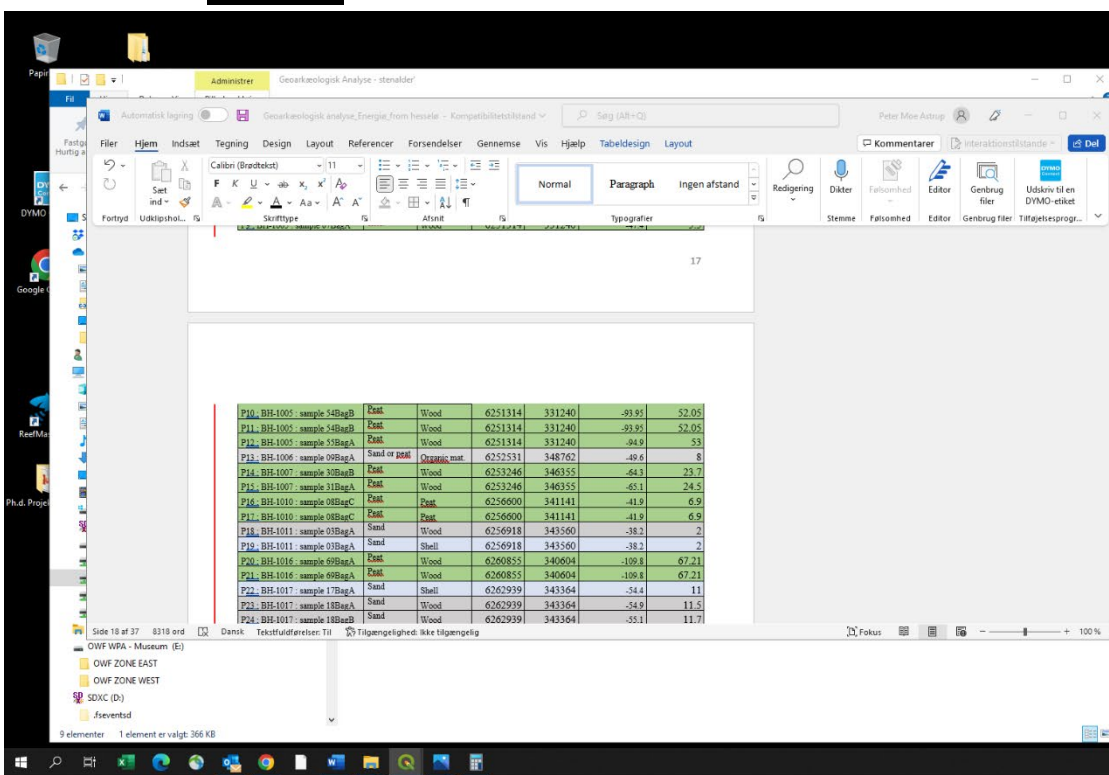


axe head with wooden shaft, lying on the gyttja layer. Photo: P.M. Astrup.



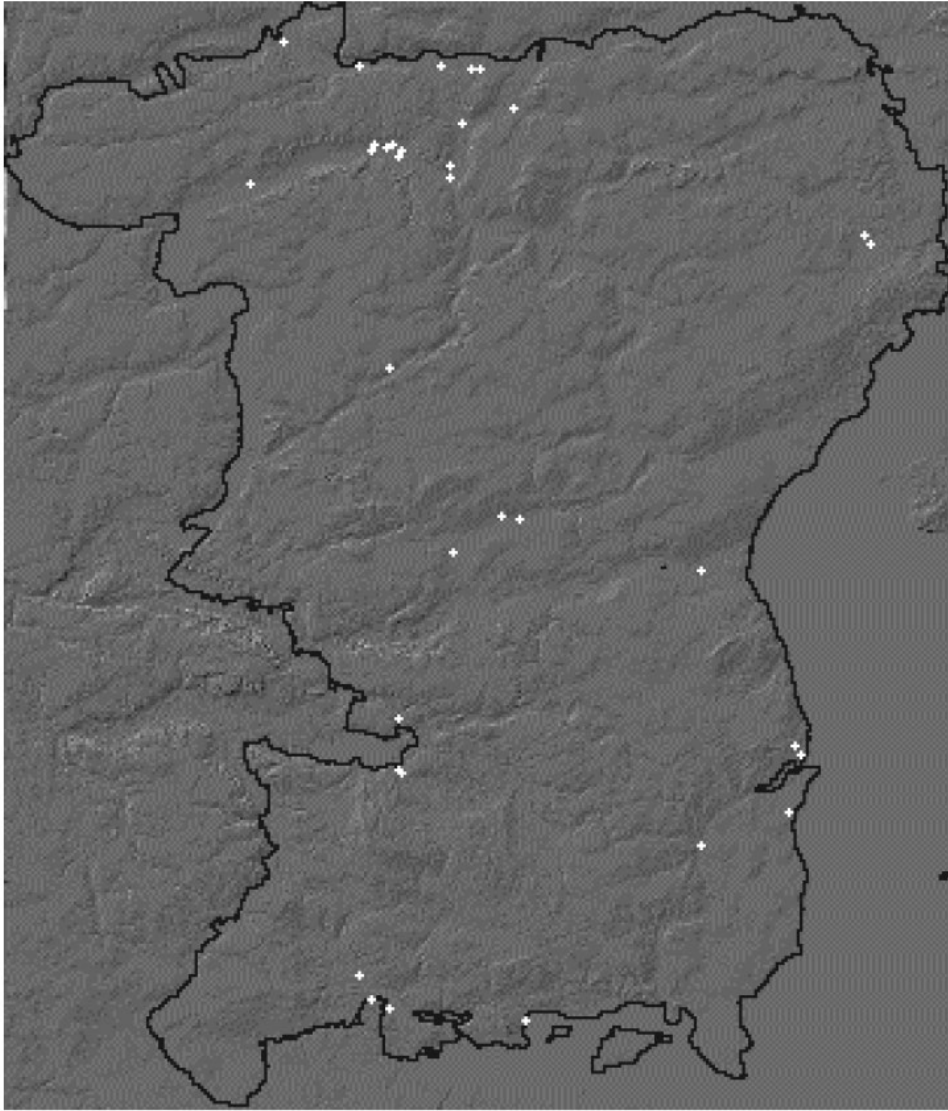
Figure 3. Excavating with an ejector pump and a straightedge. Photo: C. Skriver.

Figure 11. Examples of well-preserved limbs. Photos: D. Butler and J.G. D'IETTY museum.



Courtesy: Peter Moe Astrup

HUMAN BEHAVIOUR IS PATTERNED

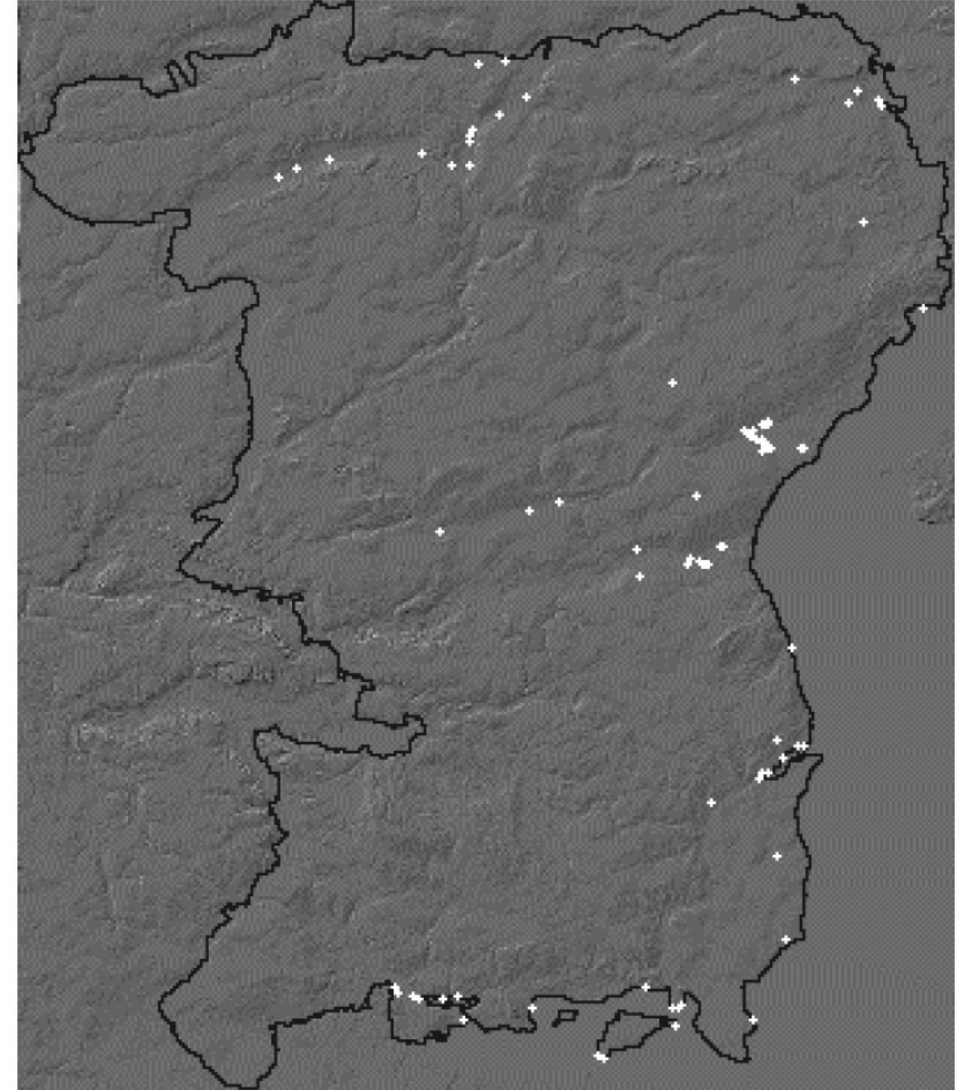


Figur 26. Maglemosekulturens bopladser.

Ejstrud 2001

BALTICS - TALLINN
5 OCTOBER 2022

JENS-BJØRN RIISAN
ASSOCIATE PROFESS



Figur 31. Bopladser fra Kongemose- og Ertebøllekultur.

Landscapes are in constant change

Archaeological cultures cross modern state boundaries

VS

Archaeological data repositories are maintained by national bodies

NORDIC ARCHAEOLOGY

=

Results:

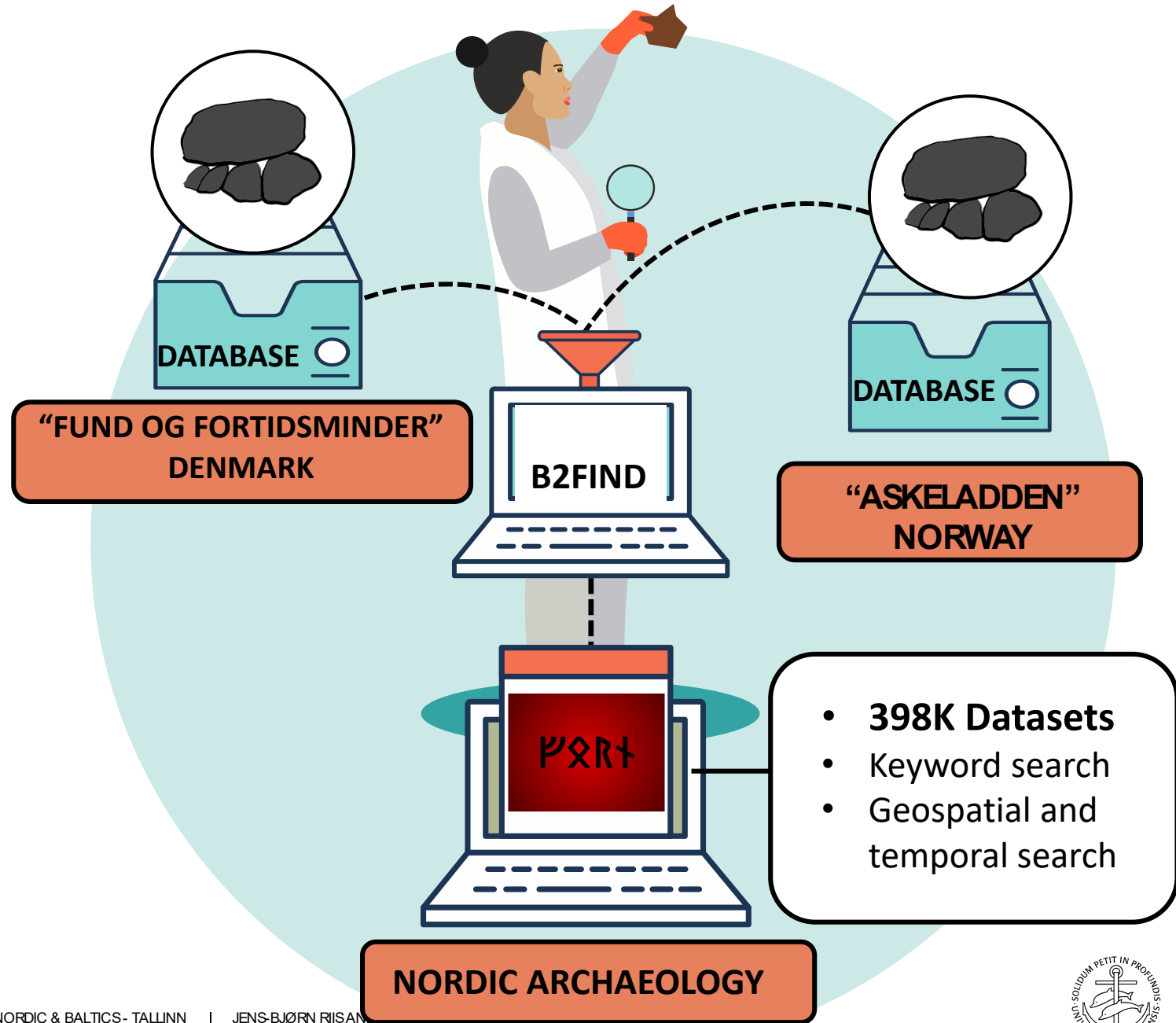
- Metadata harvested with OAI-PMH protocol
- Mapping of terminology Danish - Norwegian - English

Benefits:

- Archaeological data searchable across national databases
- Data also searchable with other data types like climate or biodiversity data

Future:

- Inclusion of other Nordic Archaeological databases
- Predictive modelling



CHALLENGES

Harvesting technologies

Partly compatible thesauri

THANKS !

- * Management of EOSC-Nordic
- * Anna-Lena Flügel, Claudia Martens, Helmut Neukirchen, Anders Sparre Conrad
- * Programmers at DKRZ- Hamburg
- * Peter Jensen, Moesgaard Museum; Espen Uleberg, University of Oslo



AARHUS
UNIVERSITY