

# IMPACT & Results

Oct 5th 2022, Tallin

Lene Krøl Andersen  
PROJECT MANAGER, EOSC-Nordic  
International Liaison, Computerome, Denmark

# The European Open Science Cloud

## Revisiting the questions from the very start of EOSC-Nordic

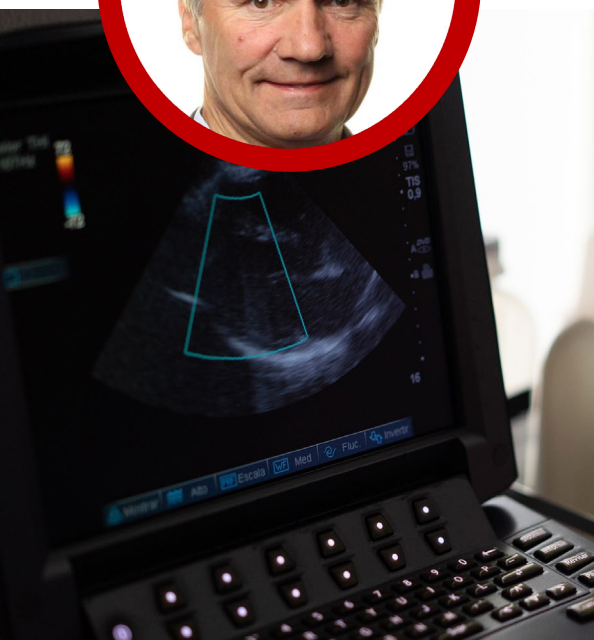


### How will EOSC change:

- The way we do science?
- Our legislation?
- Our way of collaboration?
- And ultimately our society?



# EOSC PIONEERS



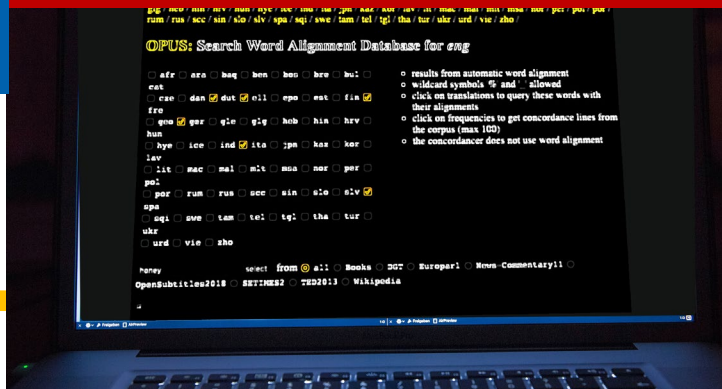
**Cardiology**  
Henning Bundgaard



**Climate Research**  
Anne Claire Fouilloux



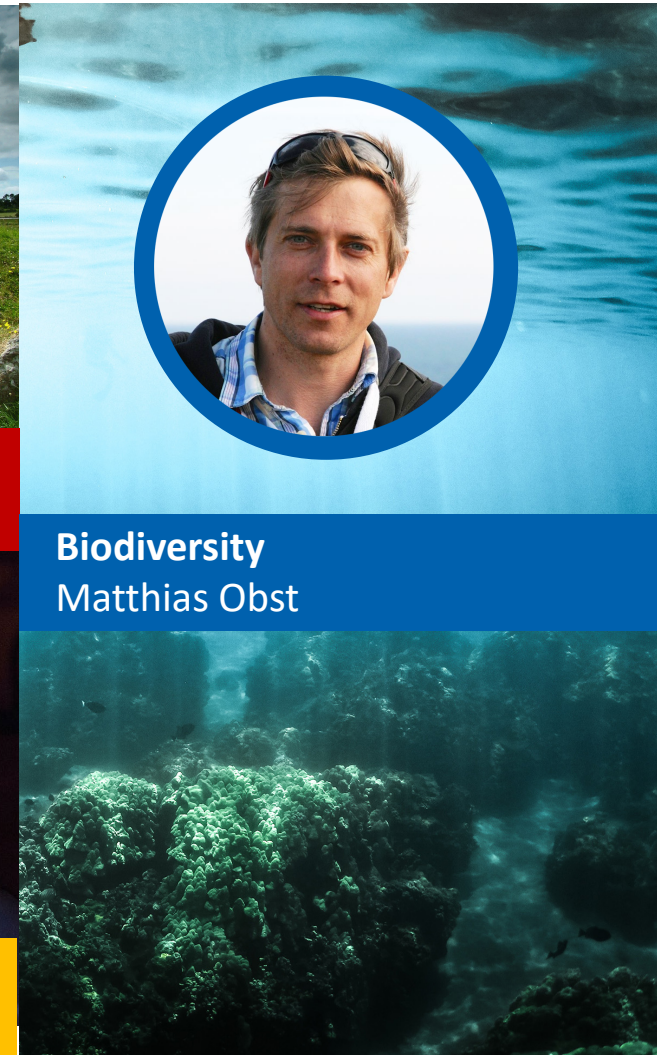
**Archaeology**  
Jens-Bjørn Riis Andresen



**Natural Language processing**  
Stephan Oepen



**Biodiversity**  
Matthias Obst



# SENSITIVE DATA AND ORCHESTRATION

## PILOTING AN ORCHESTRATION MECHANISM FOR PRECISION MEDICINE

**PILOT THE PROVISIONING OF A  
SECURE NORDIC  
INFRASTRUCTURE FOR  
SENSITIVE DATA**

### DATA CUSTODIAN

Sensitive cardiology data accesible for analysis, but doesn't leave the country

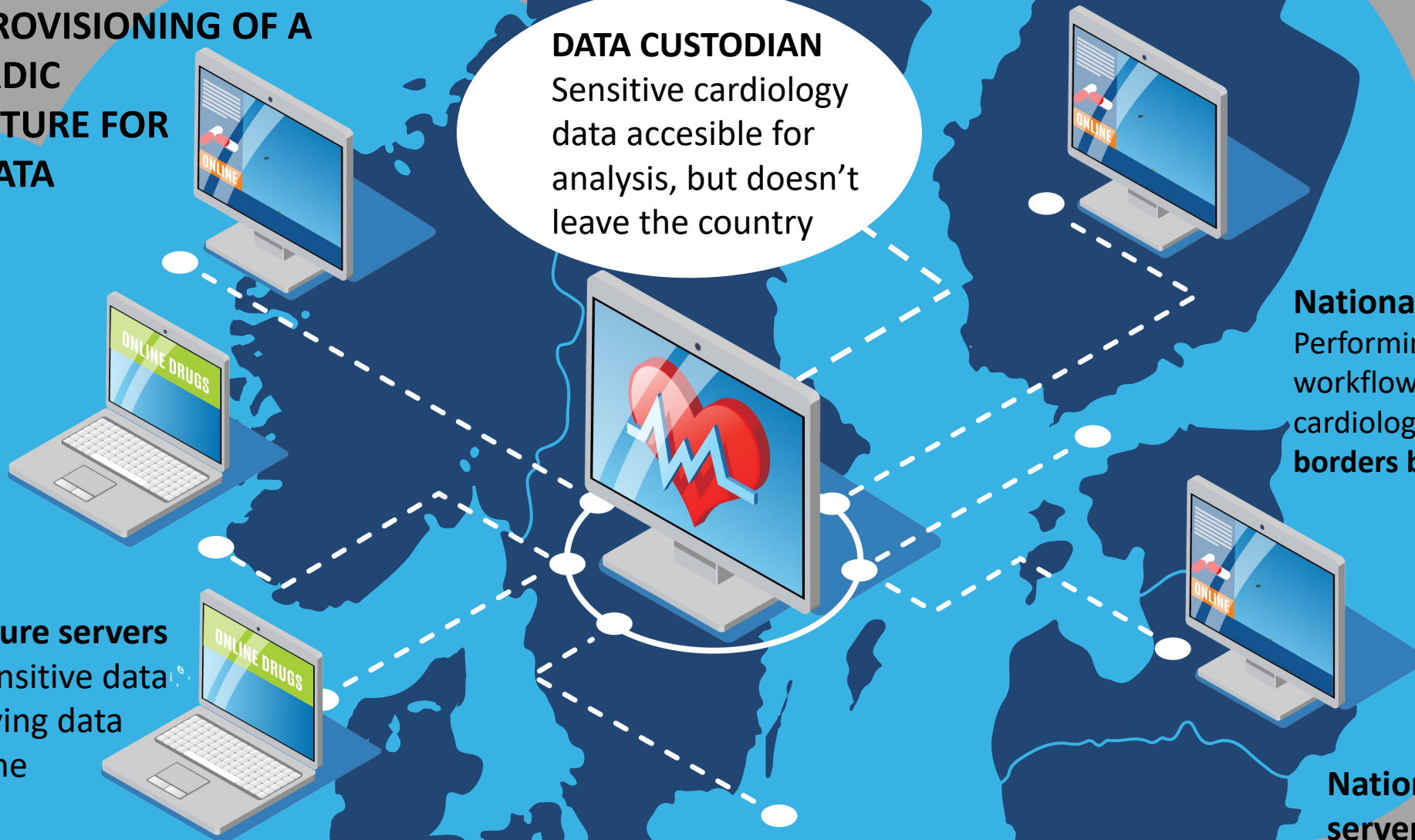
### National secure server

Performing data analysis workflows on sensitive cardiology data **across borders by orchestration**

### National secure servers

Analysing sensitive data without moving data away from the custodian.

**National secure server**





# NATURAL LANGUAGE PROCESSING

## INFRASTRUCTURE BUILDING IN NORDIC NLP COMMUNITY

=

### Results:

- First Very Large Language Model for Norwegian
- Improved techniques for data management across storage systems
- Infrastructures for sharing software, data, and derived models

+

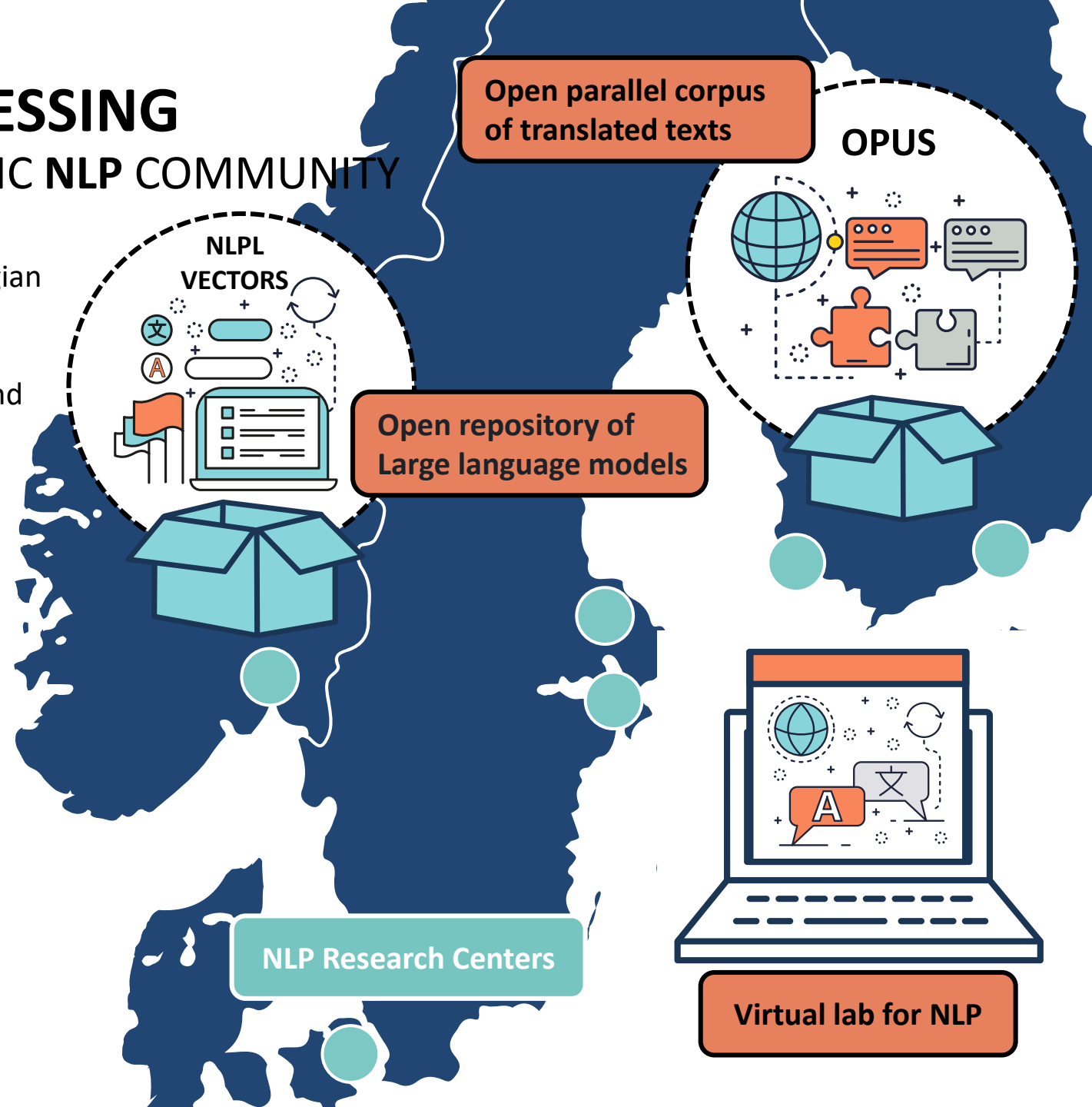
### Benefits:

- Automated, replicable, and uniform software installation on multiple superclusters
- PhD and master students can run large scale experiments
- Improved collaboration and introduction of community self help philosophy

➔

### Future:

- Participation in the LUMI GPU pilot in Finland and Norway
- Joint follow-up funding with partners in the Czech Republic and the UK



# NORDIC ARCHAEOLOGY

## DATA SEARCHABLE ACROSS COUNTRIES

=

### Results:

- Metadata harvested via OAI-PMH and ArcGIS API
- Mapping of terminology Danish - Norwegian - English

+

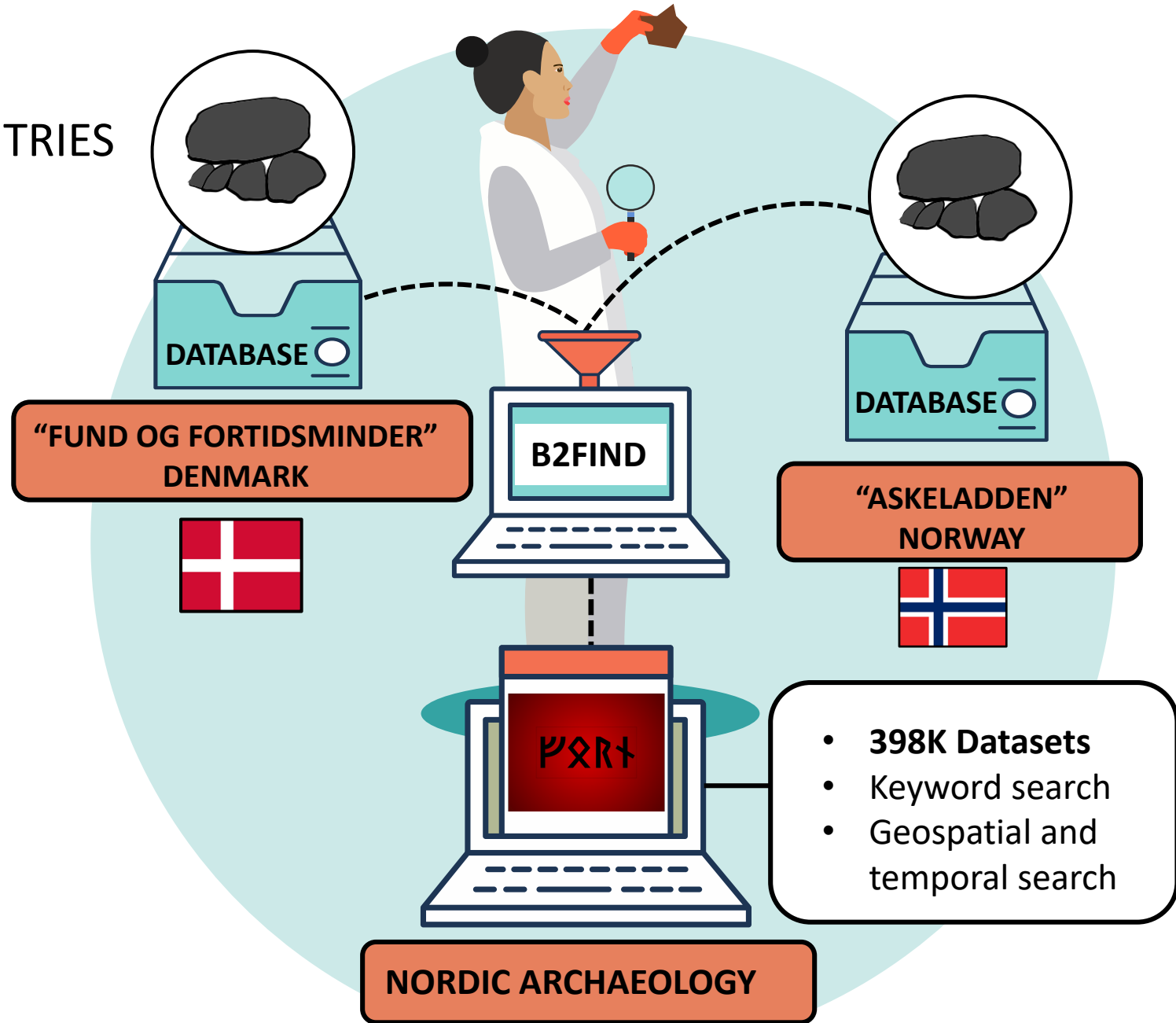
### Benefits:

- Archaeological data searchable across national databases
- Data also searchable with other data types like climate or biodiversity data

➔

### Future:

- Inclusion of other Nordic Archaeological databases
- Predictive modelling



# MARINE BIODIVERSITY

## DATA MANAGEMENT AND CROSS-BORDER DATA ANALYSIS

=

### Results:

- Successful test of platform for connecting and analysing marine genetic data across countries
- Improved data management

+

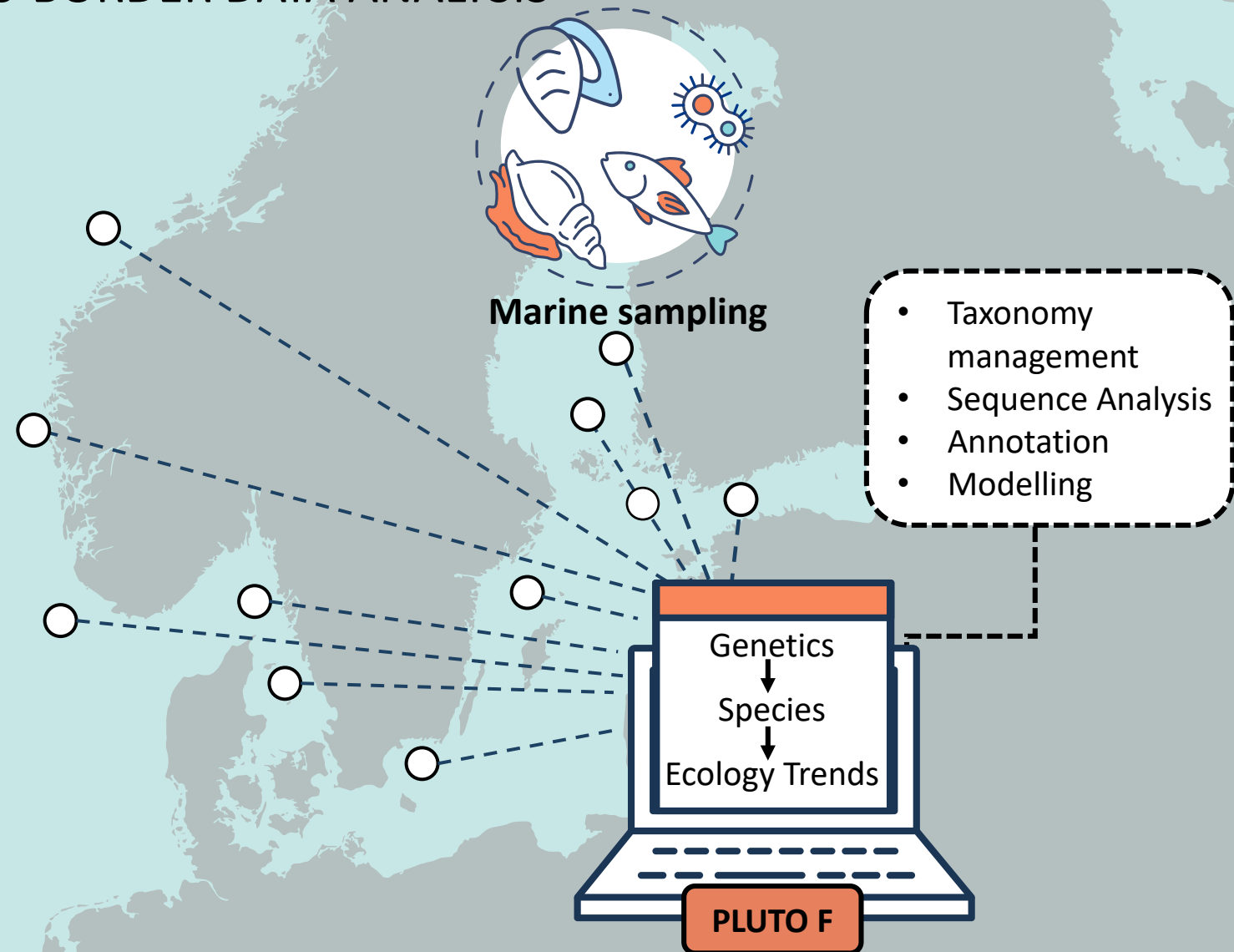
### Benefits:

- Better early warning system for invasive species
- Easier to spot Biodiversity patterns/trends

➔

### Future:

- Connecting to climate data for predictive modelling
- More European marine users on PlutoF



# EOSC Nordic Key Results



- New Services & tools facilitating i) the integration with the EOSC Future catalogue, ii) FAIR assessment & iii) EOSC knowledge uptake



- Increased FAIR uptake in the region (FAIR score increased for 98 repositories & over 300 data stewards trained)



- EOSC alignment & discussion fora consolidated in the region



- Increased Cross country / disciplinary collaboration



# Knowledge Hub

Welcome to EOSC-Nordic Knowledge Hub! We invite you to explore our knowledge base.

We have collected all our useful resources and information into this Knowledge Hub. Content and materials are constantly evolving and updating throughout the project.

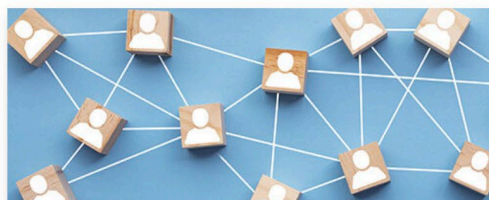
Here's a short description of each section to help you find what you're looking for.



## Materials

Key documents of the project (Reports, recommendations & guidelines)

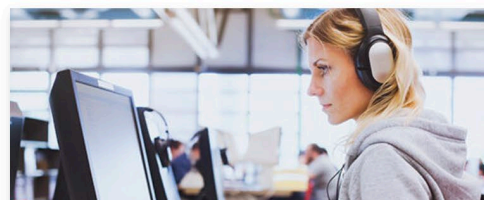
[Read more](#)



## Users and organisations

Find out what EOSC-Nordic can offer you, and explore the use cases.

[Read more](#)



## Training Library

All sorts of training events and materials

[Read more](#)



## Services

The services available and a guidance how to register a service

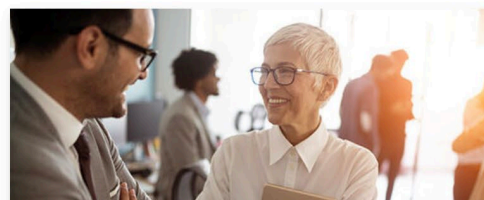
[Read more](#)



## Support

Browse FAQs or send over your request via our Service Desk

[Read more](#)



## Community

Connect with peers and learn from others in your field

[Read more](#)

FAILURE IS HOW RESEARCH ADVANCES



Finding the biggest gaps and challenges to overcome, has been an important mission of the EOSC Nordic project.

# THE END OR A NEW BEGINNING?

